



MORGAN ASSOCIATES

ESTATE & LETTINGS AGENCY



23, Honeysuckle Avenue,  
Cheltenham GL53 0AF  
£2,750 PCM



23, Honeysuckle Avenue,

Cheltenham GL53 0AF

An exceptional, four bedroom detached house located on the exclusive Brizen View development by Redrow Homes in Leckhampton. This recently constructed home has been finished to a high standard with well-proportioned rooms throughout, briefly comprising a generous sitting room, open plan kitchen dining room with doors to the garden, utility, cloak room, four bedrooms - three double and one generous single, en suite shower room and a family bathroom with shower over the bath. Externally the property benefits from an enclosed split level garden, off road parking and an integral garage. The property is warmed throughout by gas fired central heating. No Pets.



# Floor Plan

## Honeysuckle Avenue

Approximate Gross Internal Area = 132.1 sq m / 1422 sq ft  
(Including Garage)

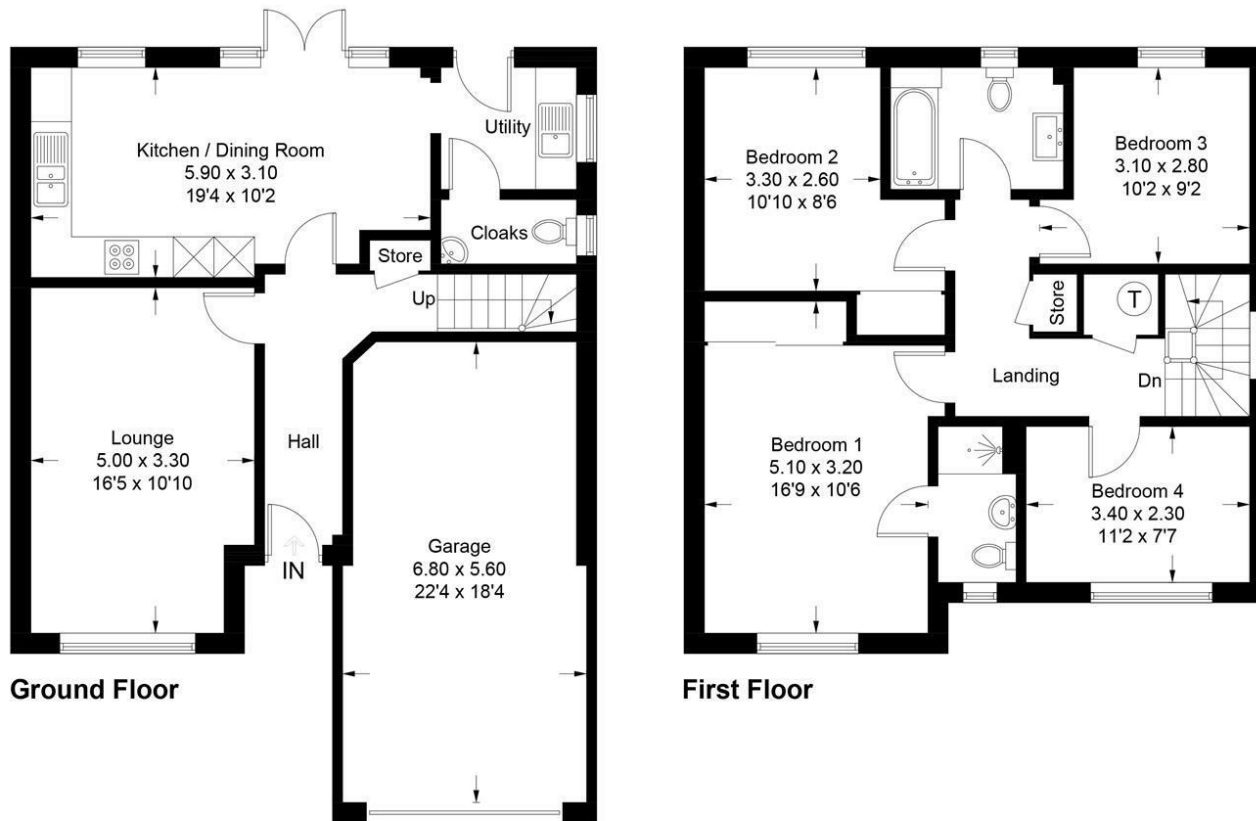
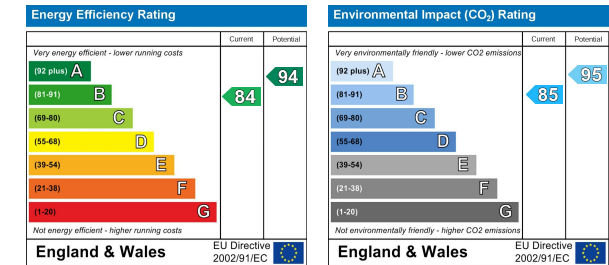


Illustration for identification purposes only, measurements are approximate, not to scale. Fourlabs.co © (ID1234927)

# Energy Efficiency Graph



# Area Map



# Viewing

Please contact us on 01242 514 285 if you wish to arrange a viewing appointment for this property or require further information.

Rotunda Buildings Montpellier Exchange  
Cheltenham  
Gloucestershire  
GL50 1SJ

T. 01242 514 285  
E. [info@morgan-associates.co.uk](mailto:info@morgan-associates.co.uk)  
W. [www.morgan-associates.co.uk](http://www.morgan-associates.co.uk)

These particulars, whilst believed to be accurate are set out as a general outline only for guidance and do not constitute any part of an offer or contract. Intending purchasers should not rely on them as statements of representation of fact, but must satisfy themselves by inspection or otherwise as to their accuracy. No person in this firm's employment has the authority to make or give any representation or warranty in respect of the property.

